



AEROSPACE
INDUSTRIES

2022



Gifu Prefecture

Location

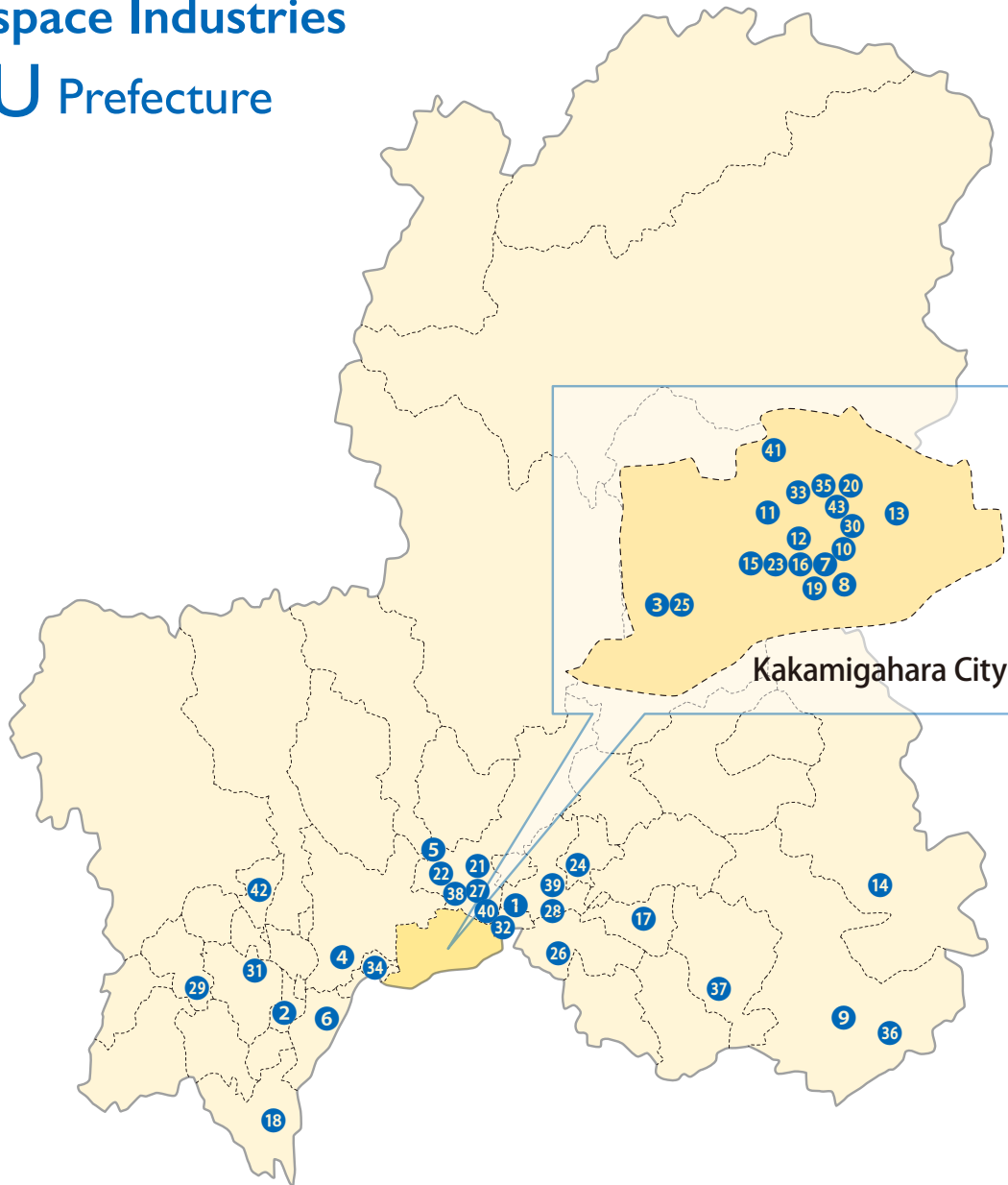
Gifu is located in the central part of Japan, giving us an advantage in facilitating networking among people and creating an integrated transport hub around the country.



Aerospace Industries GIFU Prefecture

P	Company	Assembly/ Subassembly	Machining	Jig production	Sheet metal forming	Heat treatment	Surface treatment	Composite material processing	Painting	others
1	Aoi Koki CO., LTD.		○	○	○					
2	Asahi Kinzoku Kogyo Inc. (Gifu Anpachi plant)	○	○	○			○		○	
3	IMAI AERO-EQUIPMENT MFG.CO.,LTD.	○	○	○			○		○	
4	IWAI INDUSTRIES CO.,LTD.	○	○	○	○					
5	Iwata Mfg. Co., Ltd		○		○					
6	IWATA MACHINERY WORKS LTD.		○	○						
7	Iwado Industry Co.,Ltd.	○								
8	APC AEROSPECIALTY INC.	○	○	○					○	Interior products manufacturing, Support equipment manufacturing
9	ENA KIKI Co.,Ltd.	○	○							
10	Enomoto BeA Co.,Ltd		○	○						
11	Ohori Grinding Company									Grinding process
12	Kakamigahara Aero Equipment Co., Ltd.			○						Wire harness manufacturing
13	Kato Manufacturing Co. , Ltd.		○	○						
14	KATO MFG CO.,LTD. (Nakatsugawa)				○					
15	Kawasaki Gifu Co-operative Society	○	○	○	○	○	○	○	○	Aviation human resource education, Interior goods (seat) , Wire harness, Tube
16	Kawasaki Heavy Industries,Ltd Aerospace Systems Company	○	○	○	○	○	○	○	○	
17	KOSAKA IRON WORKS CO.,LTD. (Mitake plant)		○							
18	Kondo Giken Co., Ltd.		○							
19	Sunwa Trading Corporation							○		trading company
20	SEIWA INDUSTRY CO.,LTD.		○		○					Piping parts
21	Chubu Heat treatment CO.,LTD.					○				
22	Tsukada Co.,Ltd.							○		
23	TENRYU AERO COMPONENT CO., LTD.	○			○	○	○	○	○	Equipment development and manufacturing
24	TENRYU COMPOSITE CO.,LTD.							○		
25	TOKUDA INDUSTRY CO.,LTD.	○	○	○						
26	TOBAKOSAN CO.,LTD.		○	○	○	○				
27	College of Naka-nippon Aviation									Aviation human resource education
28	NAGOJI IRON WORKS Ltd.		○	○						
29	Nabtesco Corporation(Gifu plant)	○	○	○ only a plan		○	○		○	
30	NABEYA MFG CO., LTD.		○	○						Measurement
31	NICHIDEN SEIMITSU KOGYO CO.,LTD.		○		○					Electrical discharge processing Laser procession
32	Nippon Press Industries Co.,LTD.	○	○						○	
33	HAYAKAWA INDUSTRIES CO., LTD.	○	○	○	○					
34	HIKARI MANUFACTURE CO., LTD.		○	○						
35	VR Techno Center Inc.									Human resource development
36	Fujiwatech Ltd.		○							
37	MIZUNAMI SEIKI CO., LTD.	○	○	○						
38	MIZUNO METAL WORKS CO.,LTD.	○	○	○						
39	MEIHOKU KOGYO CO.,LTD.									Material, Nondestructive inspection
40	MEIRA Corporation(seki plant)	○	○	○		○	○		○	
41	Yashima co.,Ltd.	○	○	○	○			○		
42	YOSHITECH CO.,LTD.			○						
43	wako co. Ltd.	○	○	○	○					Welding

Aerospace Industries GIFU Prefecture



- | | | |
|--|---|-------------------------------------|
| 1 Aoi Koki CO., LTD. | 15 Kawasaki Gifu Co-operative Society | 28 NAGOJI IRON WORKS Ltd. |
| 2 Asahi Kinzoku Kogyo Inc.
(Gifu Anpachi plant) | 16 Kawasaki Heavy Industries,Ltd
Aerospace Systems Company | 29 Nabtesco Corporation(Gifu plant) |
| 3 IMAI AERO-EQUIPMENT MFG.CO.,LTD. | 17 KOSAKA IRON WORKS CO.,LTD.
(Mitake factory) | 30 NABEYA MFG CO., LTD. |
| 4 IWAI INDUSTRIES CO.,LTD. | 18 Kondo Giken Co., Ltd. | 31 NICHIDEN SEIMITSU KOGYO CO.,LTD. |
| 5 Iwata Mfg. Co., Ltd | 19 Sunwa Trading Corporation | 32 Nippon Press Industries Co.,LTD. |
| 6 IWATA MACHINERY WORKS LTD. | 20 SEIWA INDUSTRY CO.,LTD. | 33 HAYAKAWA INDUSTRIES CO., LTD. |
| 7 Iwado Industry Co.,Ltd. | 21 Chubu Heat treatment CO.,LTD. | 34 HIKARI MANUFACTURE CO., LTD. |
| 8 APC AEROSPECIALTY INC. | 22 Tsukada Co.,Ltd. | 35 VR Techno Center Inc. |
| 9 ENA KIKI Co.,Ltd. | 23 TENRYU AERO COMPONENT CO., LTD. | 36 Fujiwatech Ltd. |
| 10 Enomoto BeA Co.,Ltd. | 24 TENRYU COMPOSITE CO.,LTD. | 37 MIZUNAMI SEIKI CO., LTD. |
| 11 Ohori Grinding Company | 25 TOKUDA INDUSTRY CO.,LTD. | 38 MIZUNO METAL WORKS CO.,LTD. |
| 12 Kakamigahara Aero Equipment Co., Ltd. | 26 TOBAKOSAN CO.,LTD. | 39 MEIHOKU KOGYO CO.,LTD. |
| 13 Kato Manufacturing Co. , Ltd. | 27 College of Naka-nippon Aviation | 40 MEIRA Corporation(seki plant) |
| 14 KATO MFG CO.,LTD. (Nakatsugawa) | | 41 Yashima co.,Ltd. |
| | | 42 YOSHITECH CO.,LTD. |
| | | 43 wako co. Ltd. |



Technical Field	Assembly/ Subassembly	Machining	Jig production	Sheet metal forming	Heat treatment	Surface treatment	Composite material processing	Painting	others
		○	○	○					

Outline Business

- Sheet-metal processing of Aluminum Plate
- Processing of the Aluminum Plate by machining Center
- Cutting processing by Waterjet

Our Strength

- "Check and Straight"
We've been working to rely on feeling transmitted to the hand since its Establishing. We are a professional group of craftsman of the Aluminum sheet metal.
- We have three Waterjet machines which do not matter of material and provide CFRP which is hard to process, metal stuff, Glass stuff, Rubber product with high quality, Quick delivery and Low price!
- "Do it first!"
We are always working on our projects with an indomitable spirit in order to offer proposals that will meet our customers' expectations and satisfaction.
- In June 2018, we adopted our third waterjet cutting machine aiming at increasing our productivity. Our technology, which has been improved with our continuing efforts, including difficult-to-cut materials processing and micro processing, is highly acclaimed by our customers.

Certification

JIS Q 9100 : 2016、 JIS Q 9001 : 2015

Equipment

<https://>

Water Jet Processing Machine 3units、 Vertical machining center 1 unit、 NC lathe 2 units



Address	566-2 Ohari, Sakahogi-cho, Kamo-gun, Gifu 505-0072, Japan
Tel	+81-574-25-7089
URL	https://aoikoki.co.jp
E-mail	info@aoikoki.co.jp
Establishment	December 25, 1980
Representative	Satoshi Nodo
Capital	JPY 10 million
Sales	JPY 240 million
Employees	14
Major Customers	TENRYU AERO COMPONENT CO., LTD., TOBA KOSAN CO., LTD., APC AEROSPECIALTY INC.



Asahi Kinzoku Kogyo Inc.

2

Technical Field	Assembly/ Subassembly	Machining	Jig production	Sheet metal forming	Heat treatment	Surface treatment	Composite material processing	Painting	others
	○	○	○			○		○	

Outline Business

- Manufacturing aerospace components

Our Strength

- Asahi Kinzoku Kogyo, Inc. has been manufacturing aerospace components for over 45 years.
- Our recent endeavors include the expansion of our business overseas (Malaysia,USA) and R&D on thermoplastic composites and Injection molded plastics.
- Our core competency is technologies in surface treatment and the capability as a one stop shop to Sub-Assembly. We hold process accreditations from Nadcap (CP/CT/SE/NDT) and Major Prime manufacturers.(Airbus, Boeing, Bombardier etc.)

Certification

JIS Q 9100 (AS 9100) Nadcap (CP/CT/SE/NDT)

Equipment

37 types of special process and machining

Flourescent penetrant inspection, Magnetic particle inspection, CMM, Shotpeening, HVOF, Passivation, Chemical conversion coat(5 types), Anodize(6 types), Plating(17 types), Painting(3 types), Milling, Lathe, Grinding



Address	4851-4, Maki, Anpachi-cho, Anpachi-gun, Gifu 503-0125, Japan
Tel	+81-584-64-5061
URL	http://www.asakin.com/
E-mail	asakin@akg.co.jp
Establishment	1948
Representative	Yasuhiro Yamanaka
Capital	JPY 99.5 million
Sales	JPY 3.2 billion
Employees	348 (as of Mar. 2021)
Major Customers	Mitsubishi Heavy Industries, Ltd. / Kawasaki Heavy Industries, Ltd. / SUBARU CORPORATION / ShinMaywa Industries, Ltd. SHIMADZU CORPORATION etc.

IMAI AERO-EQUIPMENT MFG. CO., LTD.

3

Technical Field	Assembly/ Subassembly	Machining	Jig production	Sheet metal forming	Heat treatment	Surface treatment	Composite material processing	Painting	others
	○	○	○			○		○	

Outline Business

- Production of Machine Parts for Aerospace and Assembly for Aircraft
- Design and Development, and Production of Ground Support Equipment for Aircraft

Our Strength

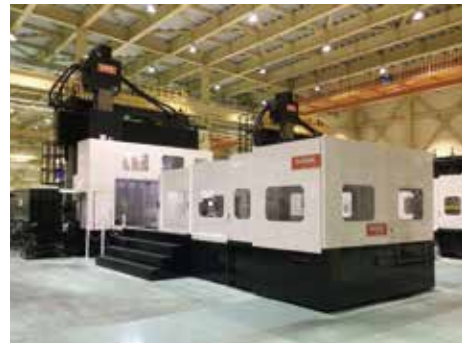
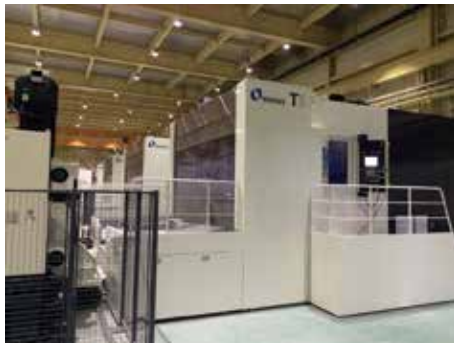
- In order to meet diversified needs, high quality and quick delivery are achieved with the maximum use of CATIA functions for efficient work.

Certification

ISO 9100, ISO 9001, Nadcap, (NDT(PI), CP, SE(Shot Peening))

Equipment

3 Axis NC Machine : 43 units, 4 Axis NC Machining : 19 units, 5 Axis NC Machining : 81 units,
 CATIA : 40 units, CADAM : 2 units, CMM : 9 units, Laser Tracker : 4 units



Address	Head Office 128 Kinzokudanchi, Kakamigahara, Gifu 504-0957, Japan
Tel	+81-58-389-2011
URL	https://www.imaiaero.co.jp/en/
E-mail	iac@imaiaero.co.jp
Establishment	May, 1947
Representative	Tetsuo Imai
Capital	JPY 96 million
Sales	JPY 3.25 billion
Employees	246
Major Customers	Kawasaki Heavy Industries, Ltd. / SUBARU CORPORATION / Mitsubishi Heavy Industries, Ltd. / ShinMaywa Industries, Ltd. / NIPPI Corporation / Spirit Aero Systems, Inc. / SAM / EMBRAER

IWAI INDUSTRIES CO., LTD.

4

Technical Field	Assembly/ Subassembly	Machining	Jig production	Sheet metal forming	Heat treatment	Surface treatment	Composite material processing	Painting	others
	○	○	○	○					

Outline Business

Assembly of aircraft parts

- Assembly of keel beams and stringers for Boeing 777 aircraft
- Assembly of keel beams for Boeing 787 aircraft
- Assembly of wing stubs for Embraer 170 aircraft

Our Strength

- Over 40years achievement and experience in assembling aircraft structural parts
- Machining and sheet metal processing of general parts.
- Speedy and flexible customer service.
- Flexible service for small lot orders.
- Economical and proper price.
- Satisfying after-sales service.

Certification

JIS Q 9100 : 2016

Equipment

Numerically Controlled Stringer Assembling Machine 2units

Numerically Controlled Drilling Machine 1unit

Vertical Machining Center 1unit



Address	3-14-7 Ichihashi, Gifu, Gifu 500-8381, Japan
Tel	+81-575-23-7028
E-mail	takano-yoshihiro@iwai-ind.co.jp
Establishment	June 16, 1964
Representative	Takayuki Iwai
Capital	JPY 40 million
Sales	JPY 600 million
Employees	80
Major Customers	Kawasaki Heavy Industries, Ltd.



Iwata Mfg. Co., Ltd.

Technical Field	Assembly/ Subassembly	Machining	Jig production	Sheet metal forming	Heat treatment	Surface treatment	Composite material processing	Painting	others
		○		○					

Outline Business

- [For aerospace industry] Manufacturing of laminated shims and solid shims.
- [For general industrial machines] Over 40,000 items of standard stocks in machine component parts, safety protection parts and painting hanging/masking accessory range.

Our Strength

- 【Laminated shims, solid shims】**
- Laminated shims are special shims in which thin metal films are bonded with adhesive, and the thickness can be adjusted by peeling of each film one by one.
 - Both laminated and solid shims can be custom-made even for one piece based on the customer's drawing.
 - Quick delivery within 3 days, being backed up with abundant material stock.
 - Our unique production system suitable for high-mix low-volume production enables to make more than 300 types of shims per day.
 - Our traceability management system allows to issue various certificates such as material certificates and inspection reports upon request
- 【Machine parts, safety protection products, painting hanging/masking accessories】**
- Same day delivery as order date, even for one piece, from over 40,000 items of standard stocks, which saves the customer's design-production time.

Certification

ISO 9001 ISO 14001 JIS Q 9100



Address	923-1 Ikejiri, Seki, Gifu 501-3264, Japan
Tel	+81-575-23-6161
URL	https://www.iwata-fa.jp/en/
E-mail	info@iwata-fa.jp
Establishment	1966
Representative	Shuzo Iwata, President
Capital	JPY 99.12 million
Sales	JPY 2.8 billion
Employees	125
Major Customers	Kawasaki Heavy Industries, Ltd. / Nabtesco Corporation / Nikon Corporation / Mitsubishi Electric Corporation, etc.

ITK IWATA MACHINERY WORKS LTD.

6

Technical Field	Assembly/ Subassembly	Machining	Jig production	Sheet metal forming	Heat treatment	Surface treatment	Composite material processing	Painting	others
		○	○						

Outline Business

- We offer a precision cutting solution for a wide range of products, including the major parts of chip mount set on the printed boards of electric components and seismic isolators for high-rise buildings. We also provide test manufacturing support for companies related to the aviation industry.

Our Strength

- We are equipped with about 100 machines including NC lathes, machining centers and 5-axis machining to provide cutting and manufacturing services for substances ranging from carbon steel and duralumin to cutting resistant materials such as titanium and Inconel. We have adopted high-spec CAD/CAMs in order to deal with components relating to the aviation industry, allowing us to cut and manufacture 3 dimensional shaped products with many free form surfaces by concurrent 5-axis machining. We guarantee the quality of the machined products through utilization of 3 dimensional measuring devices under a constant temperature environment. In addition, we have introduced a wide range of machinery ourselves including wire cut machines and laser markers for our clients located throughout Japan.
- Cylindrical grinding, centerless grinding, surface treatment and heat treatment can be provided through our partner companies.

Certification

JIS Q 9100 Certified in January 2019



Address	319, Arai, Masaki-cho Hashima, Gifu 501-6225, Japan
Tel	+81-58-392-4525
URL	https://itk.co.jp
E-mail	info@itk.co.jp
Establishment	1979 (Established 1954)
Representative	Shintaro Iwata
Capital	JPY 10 million
Sales	JPY 800 million
Employees	40
Major Customers	FUJI CORPORATION / KYB Corporation



Iwado Industry Co., Ltd.

7

Technical Field	Assembly/ Subassembly	Machining	Jig production	Sheet metal forming	Heat treatment	Surface treatment	Composite material processing	Painting	others
	○								

Outline Business

- Assembling airframes
 - Manufacturing body components for buses
 - Converting and/or renovating buses and trucks
 - Manufacturing and/or painting components for construction machines and machine tools
- <Aircraft products> B787 pressure deck B767 large cargo door B777x keel beam C-2 P-1 BK-117

Our Strength

- Since 1966, we have provided a high technology of assembling airframes.
- Our technology meets the demand for strict standards and high quality to assure safety.

Certification

JIS Q 9100, ISO 9001

Equipment

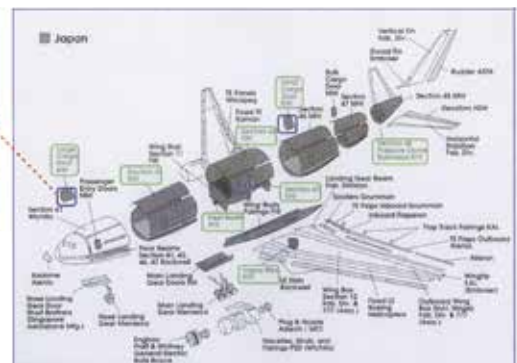
CNC 4 axis CNC machine 1unit



HEAD OFFICE



4 axis CNC machine



Address	2-10 Unuma, kawasaki-cho, Kakamigahara, Gifu 509-0147, Japan
Tel	+81-58-383-8111
URL	https://www.iwado.co.jp
E-mail	info@iwado.co.jp
Establishment	July, 1957
Representative	Representative Director Tsuyoshi Inou
Capital	JPY 45 million
Sales	JPY 1,190million
Employees	170
Major Customers	Kawasaki Heavy Industries, Ltd. Aerospace Systems Company. / J-BUS LTD. / Nippon sharyo, Ltd.



APC AEROSPECIALTY INC.

8

Technical Field	Assembly/ Subassembly	Machining	Jig production	Sheet metal forming	Heat treatment	Surface treatment	Composite material processing	Painting	others
	○	○	○					○	Interior products manufacturing, Support equipment manufacturing

Outline Business

- Our contribution to aerospace industry, starting with antirust packaging of valuable aircraft components and Refurbishment of aero-engine parts, have expanded to include airframe assembly, repair, and its painting.
- We also have been providing contract machining service specializing in aero-engine components machined by Electrochemical machining centers (ECM), and heavy-duty containers for transportation and storage of delicate and precision aerospace components and equipment.

Our Strength

●ECM

The hardest heat-resistant alloys are machined electrolytically to castings, blades, disks and other aero-engine components through ECM process, which are provided to domestic and foreign aero-engine manufacturers. ECM best suits the need for the mass production of complex shapes that are too difficult or time consuming for traditional machining process. We also design and develop ECM to meet the specific needs of our customers.

●Containers for aerospace equipment

Heavy duty containers protect valuable or sensitive equipment against impact and damage during transportation and storage. Based on the accumulated data we have acquired for many years we design and build high performance containers specially used for aerospace and satellite applications.

Certification

JIS Q 9100, ISO 9001, ISO 14001



Address	4-26 Unumaasahi-machi, Unuma, Kakamigahara, Gifu 509-0145, Japan
Tel	+81-58-370-5711
URL	https://www.apc-aero.co.jp/
E-mail	t1sales@apc-aero.co.jp
Establishment	December, 1957
Representative	Ichirou Yamashita
Capital	JPY 210 million
Sales	JPY 4.0billion
Employees	383
Major Customers	Ministry of Defense / Kawasaki Heavy Industries, Ltd. / SUBARU CORPORATION / IHI Corporation / Mitsubishi Heavy Industries, Ltd.

Technical Field	Assembly/ Subassembly	Machining	Jig production	Sheet metal forming	Heat treatment	Surface treatment	Composite material processing	Painting	others
	○	○							

Outline Business

- Machining and sub-assembling aircraft parts
- Machining semiconductor manufacturing devices

Our Strength

- Specilized in the precision machining of small-to-medium size parts, we offer you our services including the machining of aluminum, hard-to-cut materials and forged products, as well as round and plate materials both in single orders and mass production.
- We have been fulfilling our customers' needs in every possible aspect with our technology and quality assurance system since being established in 1967.

Certification

JIS Q 9001、 JIS Q 9100

Equipment

5-Axis Machining Center 3units, 4-Axis Machining Center 11units, Combined Lathe 1unit, NC Lathe 13units, Precision Lathe 9units, Milling Machine 3units, CMM, etc.



Address	2453-22, Yatsubo, Iwamura-cho, Ena, Gifu 509-7403, Japan
Tel	+81-573-43-0025
URL	http://www.enakiki.co.jp/
E-mail	k-yasuda@enakiki.co.jp
Establishment	October, 1967
Representative	Hidehiko Imai
Capital	JPY 45 million
Employees	83
Major Customers	Kawasaki Heavy Industries, Ltd. / Nabtesco Corporation / Nikon Corporation / MEIRA Corporation

Enomoto BeA Co., Ltd.

10

Technical Field	Assembly/ Subassembly	Machining	Jig production	Sheet metal forming	Heat treatment	Surface treatment	Composite material processing	Painting	others
		○	○						

Outline Business

- Manufacture of aerospace-related components and design, produce, fixtures for machining.
- Develop, design, manufacturer and provide machine protection products.
- Research, develop, manufacture and provide environment-related projects and products.

Our Strength

- We stand out amongst our competitors by specializing in many state of the art double column machining centers and large sized 3-axis and 5-axis machines.
- We currently have a sufficient number of skilled NC programmers and can react quickly to increase CAD/CAM (CATIA) systems when necessary.
- Due to our 65 years of accumulated experience in the aerospace industries, our excellent technology to perform highly difficult precision manufacturing and quality assurance systems are highly appreciated by leading heavy industries.
- We develop our own machine protection products including (chip conveyors and telescopic way covers) which lead the market with a share of over 30% in Japan.
- We locate in Kakamigahara, Gifu which is a major aerospace industry center in the Tokai district.

Equipment

5-Axis Machining Center 27units, 4-Axis Machining Center 11units, 3-Axis Machining Center 23units



Address	5-10, Soharakoamachi, Kakamigahara, Gifu 504-8551, Japan
Tel	+81-58-389-7433
URL	https://www.enomotoweb.com
E-mail	e.hr@enomotoweb.com
Establishment	August, 1951
Representative	Naohiro Enomoto
Capital	JPY 10 million
Sales	JPY 3,651 million
Employees	360
Major Customers	Kawasaki Heavy Industries, Ltd. / Mitsubishi Heavy Industries, Ltd.



Ohori Grinding Company

11

Technical Field	Assembly/ Subassembly	Machining	Jig production	Sheet metal forming	Heat treatment	Surface treatment	Composite material processing	Painting	others

Outline Business

We serve as your partner for grinding in production development, and offer ideal processing and grinding solutions

Our Strength

- 1, Grinding processing by expert craftsmen.
- 2, Measurement of product with multiple inspection facilities.
- 3, Various products (air-plane actuators, bearings, measurement devices, gauges, main spindles of industrial machines.)
- 4, Materials and manufacturing (Fe, SUS, AL, Ti, FC, CFRP, Cu, Inconel, etc), (From 1 to 100 pieces)

Certification

ISO 9001、 JIS Q 9100

Equipment

Cylindrical grinder 16units, Inner Grinder 15units, Surface Grinder 10units, Jig grinder 4units, Profile Grinder 4units, Coordinate measuring machine 1unit, Roundness measuring instrument 2units, Surface roughness measuring instrument 1unit



Address	1-9 Terajima-cho, Sohara, Kakamigahara, Gifu 504-0842, Japan
Tel	+81-58-389-1811
URL	https://www.ohorikenma.co.jp
E-mail	ohorikenma@sky.plala.or.jp
Establishment	1968
Representative	Ken Ohori
Capital	USD 72,000 (110JPY/\$)
Sales	USD 5,454,000 (110JPY/\$)
Employees	55
Major Customers	Kawasaki Heavy Industries, Ltd. / Meira corporation / Asahi Kinzoku Kogyo Inc.

Kakamigahara Aero Equipment Co., Ltd. 12

Technical Field	Assembly/ Subassembly	Machining	Jig production	Sheet metal forming	Heat treatment	Surface treatment	Composite material processing	Painting	others
			○						Wire harness manufacturing

Outline Business

Manufacture of wiring harnesses for aircrafts, helicopters and missiles
 Wiring harness build-up for quick installation on site (aircraft)
 Design and manufacture of GSE (Ground Support Equipment)

Our Strength

Based on matured technical skills, KAE is striving to meet customers' demands with cutting-edge technologies and state-of-the-art equipment.

Our expertise allows us to manufacture superior protection of wiring harnesses against the severe environment such as high humidity, high salt, strong vibration and electromagnetic interferences.

We provide our products in a short lead time and at an affordable price.

Certification

ISO 9001, JIS Q 9100

Equipment

- ① Wire marking machine - laser : Spectrum Nova860 2units, CAPRIS50-300ES 1unit
- ② Test device : manufactured by KAE 3units, Schaffner W427 1unit, MK TEST SYSTEM D1500 1unit)
- ③ Thermostat chambers : ESPEC PL-3KP 1unit



Address	3-6 Sohara, Koua-machi, Kakamigahara, Gifu 504-0814, Japan
Tel	only e-mail
URL	http://www.kae-gifu.co.jp
E-mail	n.hashimoto@kae-gifu.co.jp
Establishment	April 18, 1968
Representative	Masahiro Hashimoto, President
Capital	USD 90,909 (110JPY/\$)
Sales	USD 12,727,000 (110JPY/\$)
Employees	150
Major Customers	Kawasaki Heavy Industries, Ltd. / Mitsubishi Heavy Industries, Ltd. / SUBARU CORPORATION / Nippi Corporation

Kato Manufacturing Co., Ltd.

13

Technical Field	Assembly/ Subassembly	Machining	Jig production	Sheet metal forming	Heat treatment	Surface treatment	Composite material processing	Painting	others
		○	○						

Outline Business

- We are manufacturing aerospace parts and designing and manufacturing tools.

Our Strength

- We are a company specialized in the field of aerospace machinery.
- We are aiming to achieve maximum efficiency in production for all sizes of order and item, through the introduction of a 5-axis machining center and an emphasis on our flexible manufacturing system.
- Additionally, in April 2015 we entered into an aviation components' manufacturers' association. Through consolidating all production processes with corporations within the association producing small to medium parts for civil aviation, such as Boeing US, we are also aiming reduce cost and time until delivery, creating a more competitive production chain for our products.
- Occupying a unique position within the domestic market for aviation components, we are working towards a corporate structure that can handle a large number of orders from both international and domestic airplane manufacturers.

Certification

JIS Q 9100 : 2016、 JIS Q 9001 : 2015 (ISO 9001 : 2015)

Manufacture of aerospace machine parts for body and engine parts

(Non-Applicable Clause(s) : 8.3 Design and development of products and services)

Equipment

5-Axis M/C 14units,
4-Axis M/C 26units,
3-Axis M/C 18units,



Address	5-82-20, Kakamihigashi-machi Kakamigahara, Gifu 509-0103, Japan
Tel	+81-58-379-0111
URL	http://www.katoseisakusho.co.jp/
E-mail	takashima@katoseisakusho.co.jp
Establishment	April, 1947
Representative	CEO Takashi Kato
Capital	JPY 10 million
Employees	82
Major Customers	Mitsubishi Heavy Industries, Ltd. / Kawasaki Heavy Industries, Ltd



KATO MFG CO., LTD. (Nakatsugawa)

14

Technical Field	Assembly/ Subassembly	Machining	Jig production	Sheet metal forming	Heat treatment	Surface treatment	Composite material processing	Painting	others
				○					

Outline Business

- We fabricate items related to the aircraft and automotive industries; solar panel systems; ventilation machinery; housebuilding soundproofing and sundry other products.

Our Strength

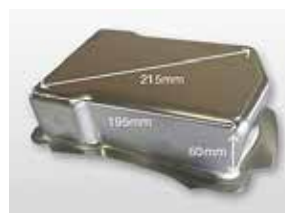
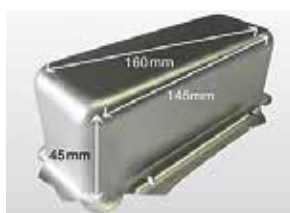
- Established in 1888 and faithfully serving our clients needs for 134 years to the current time.
- We have extensive experience in serving the aircraft and automotive industries providing high quality products at competitive prices and to strict deadlines. In recent years, we have had a growing involvement with the aircraft manufacturing industry achieving JISQ9100(ISO 9001) certification.
- Our hydraulic presses can be adapted to complex and deep forms or shapes. Therefore we can make a large variety of shaped products in various sizes in large or small quantities. Not only are we proud of our products finish, final appearance and adapting hydraulic presses is superior to using usual ones when processing aluminium parts for small size aircraft, we are able to minimise the number of operation involved in the process and thereby reduce costs and time of delivery.
- We advise our clients about the cost and value of a product according to VA and VE analysis when discussing their needs. 20% savings can be achieved by choosing a hydraulic press process over a "cut and grind" process.
- We are able to provide inventory and dispatch management services.
- Our company is staffed by employees from a mature demographic with experience, expertise and this enables us to maintain high quality products and services at competitive prices in international market place whilst serving the social needs of our local Japanese community.

Certification

JIS Q 9100 : 2016

Equipment

5-Axis Horizontal Machining Center, Hydraulic Presses 3units



Address	447-5, Komanba, Nakatsugawa, Gifu 508-0011, Japan
Tel	+81-573-65-4175
URL	http://www.katog.co.jp/en
E-mail	kkato@katog.co.jp
Establishment	1954
Representative	Keiji Kato, Representative director / President
Capital	JPY 56 million
Sales	JPY 1,400 million
Employees	90
Major Customers	MITSUBIHI HEAVY INDUSTRIES, Ltd. / MitsubishiMotors Corporation / Mitsubishi Electric Corporation / Kawasaki Heavy Industries, Ltd. / Nabtesco Corporation / KOITO MANUFACTURING CO., LTD. / TENRYU AERO COMPONENT CO., LTD. / Tamagawa Parts Manufacturing Co., Ltd. / KOIKESEISAKUSHO CO., LTD. / APC AEROSPECIALTY INC. / DENSO AIRCOOL CORPORATION / LIXIL Corporation.



Kawasaki Gifu Co-operative Society 15

Technical Field	Assembly/ Subassembly	Machining	Jig production	Sheet metal forming	Heat treatment	Surface treatment	Composite material processing	Painting	others
	○	○	○	○	○	○	○	○	Aviation human resource education, Interior goods (seat), Wire harness, Tube

Outline Business

- Kawasaki Gifu Co-operative Society is the association duly organized and existing under the Japanese SME Cooperatives Act. The head office supports members in the field of finance, job training, personnel management, health and welfare.
- It consists of key suppliers of Gifu Works - Kawasaki Heavy Industries, Ltd. The members provide local and overseas customers with a wide range of aerospace products such as CNC machined parts, sheet metal parts, composites, tubes, wire harnesses and major & minor assemblies. They have capabilities of tooling and manufacturing of G.S.E. also.

Our Strength

- We have nearly 50 years of experience in manufacturing of parts and sub-assemblies for the aerospace and defense industry. We participate or participated in various programs such as Boeing 767/ 777/ 787, Airbus 321, Embraer 170/190 and Airbus Helicopters H145.
- "Meeting Challenges of the Future with Our Integrated Power" Through full vertical integration of machining, forming, Nadcap special processes, NDT and assembly in group, we provide high-quality products just in time to meet customers demands.

Certification

JIS Q 9100 18 Companies, ISO 9001 16 Companies,
 NADCAP 4 Companies (Chemical Processing Composites Heat Treating NDI)
 ISO 14001 4 Companies

Equipment

Machining center 5-axis : 185 4-axis : 114 3-axis : 192, NC Lathe 53, CNC vertical Lathe 15,
 Boring Machine : 21, Electrolytic Machine : 7, Autoclave : 4, Heart Treatment : 3 SMEs,
 Surface Treatment : 2 SEMs, CMM : 46, Laser Tracker : 17, CATIA : 114, CAD/CAM : 85



Machining(5 Axis 2 Spindle M/C)



Surface Treatment

Address	1-17-1 Sohara koamachi, Kakamigahara, Gifu 504-0814, Japan
Tel	+81-58-382-2175
Establishment	December 8, 1951
Representative	Ryosuke Inoue
Capital	JPY 45.2 million
Sales	JPY 14.9 billion
Employees	7 (2,765 / 22 Member Companies)
Major Customers	Kawasaki Heavy Industries, LTD. / NIPPI Corporation, etc.

Kawasaki Heavy Industries, Ltd. Aerospace Systems Company 16

Technical Field	Assembly/ Subassembly	Machining	Jig production	Sheet metal forming	Heat treatment	Surface treatment	Composite material processing	Painting	others
	○	○	○	○	○	○	○	○	

Outline Business

- In the air & space business, we research, develop, manufacture & repair products ranging from large and small scale fixed-wing, helicopters and guided weapon systems to space related products, and in the engine business, we manufacture and repair engines for helicopters as well as manufacture engine parts for airliners.

Our Strength

- We provide innovative products and services that can meet a wide variety of needs all over the world by utilizing integrated high technologies in the fields of “Mobility Systems (rail-marine-air)”, “Energy”, and “Industrial Equipment”. At the same time, we are striving to contribute to a society with a green vision.



Address	1 kawasaki-cho, kakamigahara, Gifu 504-8710, Japan
Tel	+81-58-382-5712
URL	https://www.khi.co.jp/
E-mail	kamada_yu@khi.co.jp
Establishment	1896 Yasuhiko Hashimoto
Representative	Yoshinori Hashimoto President and Chief Executive Officer
Capital	JPY 104,484 million
Sales	JPY 1,501 billion
Employees	36,587
Major Customers	Municipality / Ministry of Defense / JAXA / BOEING / EMBRAER / AHD / Rolls-Royce / Pratt & Whitney



KOSAKA IRON WORKS CO., LTD. (Mitake Plant)

17

Technical Field	Assembly/ Subassembly	Machining	Jig production	Sheet metal forming	Heat treatment	Surface treatment	Composite material processing	Painting	others
		○							

Outline Business

- Manufacture airplane's precision parts.
- Mass-production of turbine blades grinding mounted on the aircraft engine.
- Machining rocket engine parts.
- Manufacture prototype developed products for rockets.

Our Strength

- We specialize in machining small precision parts. The parts sizes are about a fingernail to hand size, and the cutting has wide variety.
- We will deal with any urgent order.
- We will challenge any project using the technology we've grown from 1958.

Certification

ISO 9001, JIS Q 9100, MSJ 4000

Equipment

Machining center 4units,
 CNC milling machine 3units,
 Vertical milling machine 3units,
 NC lathe 8units,
 NC lathe with milling 2units,
 Complex machine 3units
 and many other measuring instruments etc.



Address	4-26 Kaname-cho, Minami-ku, Nagoya, Aichi 457-0802, JAPAN 【Mitake factory】 2188-62 Minamiyama, Mitake, Mitake-cho, Kani-gun, Gifu 505-0116, Japan 【Matsusaka factory】 22 Koyocho, Matsusaka, Mie 515-0053, Japan
Tel	+81-52-611-5456
URL	https://www.kosakaiw.com/
E-mail	kosakainfo@kosakaiw.com
Establishment	May, 1958
Representative	President Daisuke Kosaka
Capital	JPY 20 million
Sales	JPY 700 million
Employees	85
Major Customers	Mitsubishi Heavy Industries, Ltd. etc.

Kondo Giken Co., Ltd.

18

Technical Field	Assembly/ Subassembly	Machining	Jig production	Sheet metal forming	Heat treatment	Surface treatment	Composite material processing	Painting	others
		○							

Outline Business

- Automotive components, specialized parts, machine tool components, medical tools, control equipment, and precision machining of aircraft components

Our Strength

● Technology

Design and manufacture of machine tools

Manufacture of cutting tools and development of re-grinding methods

→ Contributing to an increase of productivity

Use of our own inspection systems by a CMM (Coordinate Measuring Machine)

→ Establishing an integrated system of production from raw materials to finished products

● Specializations and experiences

Aluminum (A2017, A2024, A5052, A7075)

Titanium (Ti-6AL-4V)

Stainless (SUS303, SUS304, SUS316, SUS430, SUS630, 15-5PH)

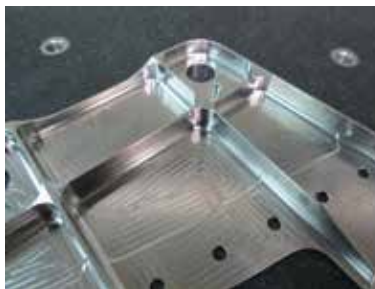
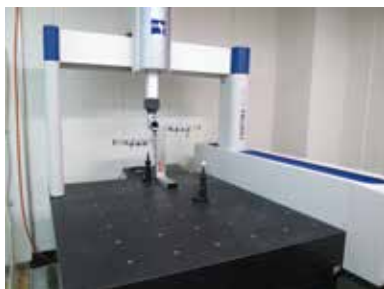
Heat-proof hook (713C, SCH21, HK30)

Certification

ISO 9001, JIS Q 9100

Equipment

5 axis NC profiler, CMM (Coordinate Measuring Machine), 3D CAD/CAM, etc.



Address	335-1, Gocho, Kaizu-cho, Kaizu, Gifu 503-0645, Japan
Tel	+81-584-53-0936
URL	http://kondougiken.com
E-mail	info@kondougiken.co.jp
Establishment	May 1, 1980
Representative	Hironori Kondou
Capital	JPY 24 million
Sales	JPY 1,300 million
Employees	64
Major Customers	HIKARI SEIKO CO., Ltd. / Howa Machinery, Ltd. / Brother Industries, Ltd.

STC Sunwa Trading Corporation

19

Technical Field	Assembly/ Subassembly	Machining	Jig production	Sheet metal forming	Heat treatment	Surface treatment	Composite material processing	Painting	others

Outline Business

- Import and sales of aerospace parts, materials, chemical products, equipment and tools
- Import and sales of composite materials and equipment for automotives, vehicles and general industry, molding and processing

Our Strength

- Since our establishment in 1976, we have been engaged in the import and sales of aircraft-related materials as a technical trading company and have steadily expanded our business.
- In the field of manufacturing and repairing aircraft, engines, and equipment, we continue to provide our customers with the world's only-one technology as the exclusive agent in Japan for many specialized manufacturers in the United States, England, Germany, France, and Switzerland.
- In recent years, we have also contributed to composite materials and molding technologies to promote weight reduction and SDGs in the automotive field and others.

Certification

JISQ9100, ISO9001



Address	3-204, Unuma, kawasaki-cho, Kakamigahara, Gifu 509-0147, Japan
Tel	+81-58-389-4511
URL	http://www.sunwa-trading.co.jp
E-mail	stc003@sunwa-trading.co.jp
Establishment	January 24, 1976
Representative	Shunichi Baba
Capital	JPY 10 million
Sales	JPY 1 billion
Employees	14
Major Customers	Kawasaki Heavy Industries, Ltd. / Mitsubishi Heavy Industries, Ltd. / SUBARU CORPORATION / IHI Corporation / ShinMaywa Industries, Ltd. / NIPPI Corporation / Nabtesco Corporation / Shimadzu Corporation / KYB Corporation, etc

Technical Field	Assembly/ Subassembly	Machining	Jig production	Sheet metal forming	Heat treatment	Surface treatment	Composite material processing	Painting	others
		○		○					Piping parts

Outline Business

- Manufacture of tubes for aerospace, automotive and machine tool industries
- Manufacturing of machined parts

Our Strength

- With over 35 years of experience, SEIWA manufactures various tubes for aircraft manufactures in Japan.
- Low pressure tubes-fuel, preheating, exhaust, fire extinguishing systems High pressure tubes-oil pressure system
- Material: aluminum, titanium, stainless steel Thickness:1/4~1.5 inches Terminal:single & double flaring,dyna-swaging,beading Pressure test:max.15,000 psi
- SEIWA inspects bent tubes using the state-of-art CMM, various calibrated devices and checking jigs. SEIWA is certified JIS Q 9100 and the customer's QMS.

Certification

JIS Q 9100、 ISO9001

Equipment

NC tube bending machine:Hydraulic right-hand 2units, Electric left-hand 1unit(1/4"~1/5")
 CMM 2units (NC bender online type)
 Pressure test device:high pressure:300~15,000 psi 1unit, low pressure 0~700 psi 1unit
 Terminal processing machine 3units (Single and Double flare, Bead, Dyna-swage)



Products 1



Products 2



Products 3



NC tube benders



CMM

Address	3-1-1, Techno Plaza, Kakamigahara, Gifu 509-0109, Japan
Tel	+81-58-322-5551
URL	https://www.seiwa-i.com
E-mail	k.sato@seiwa-i.com
Establishment	1984
Representative	Yoshiro Tsuchiya
Capital	JPY 10 million
Sales	USD 1,820 million (110JPY/\$)
Employees	109
Major Customers	Kawasaki Heavy Industries / Mitsubishi Heavy Industries / Nabtesco Corporation

Chubu Heat treatment CO.,LTD.

21

Technical Field	Assembly/ Subassembly	Machining	Jig production	Sheet metal forming	Heat treatment	Surface treatment	Composite material processing	Painting	others
					○				

Outline Business

- Metal heat treatment processing
Processing types: general tuning, bright quenching, bright annealing, carburizing and quenching, shotblasting

Our Strength

- Heat treatment of sizes up to 800 mm in diameter and 1,600 mm in height is possible.

Certification

JIS Q 9100 2016 Version

Equipment

Batch furnace 7 units
Pit furnace 2 units
Continuous furnace 4 units
Shotblasting machine 10 units



Address	2694, higashinobora, tounobora, Seki, Gifu 501-3206, Japan
Tel	+81-575-23-0141
URL	https://netsu123.com
E-mail	info@netsu123.com
Establishment	May, 1981
Representative	Noriyoshi Kataoka
Capital	JPY 30 million
Sales	JPY 700 million
Employees	60
Major Customers	Machine tool manufacturers, automotive parts manufacturers, construction machinery parts manufacturers, etc.

Technical Field	Assembly/ Subassembly	Machining	Jig production	Sheet metal forming	Heat treatment	Surface treatment	Composite material processing	Painting	others
							○		

Outline Business

- Metal stamping product
- manufacturing

Our Strength

- We are challenging various composite materials by applying the technology we have cultivated in metal stamping to CFRP and GFRP piercing.
- We are striving to meet our customer quality requirements by sharing our knowledge with our young employees.
- First, we will attempt to ascertain whether or not we can pierce through any material.
- Please feel free to inquire as to whether or not we can pierce through a certain kind of material - we will attempt to do so.

Equipment

200-ton digital electric servo press



Address	554-1 Oze, Seki, Gifu 501-3265, Japan
Tel	+81-575-23-2376
URL	http://www.t-k-d.co.jp/
E-mail	info@t-k-d.co.jp
Establishment	1970
Representative	Hiroki Tsukada
Capital	JPY 10 million
Sales	JPY 340 million
Employees	17
Major Customers	Seki cutlery manufacturer / Housing equipment manufacturer / Motor-related parts manufacturers / Semiconductor equipment manufacturers



TENRYU AERO COMPONENT CO., LTD. 23

Technical Field	Assembly/ Subassembly	Machining	Jig production	Sheet metal forming	Heat treatment	Surface treatment	Composite material processing	Painting	others
	○			○	○	○	○	○	Equipment development and manufacturing

Outline Business

- Aircraft parts manufacture (sheet metal parts and composite parts)
- Airframe assembly
- Design / development and manufacturing of aircraft components (various types of seats)

Our Strength

- In terms of quality assurance, we have acquired JIS Q 9100:2016 & JIS Q 9001:2015 certification.
- Thus, we have achieved a global standard for quality along with a strict management system.

Certification

JIS Q 9100, NADCAP (Heat Treating, NDT, Chemical Processing, Composites)

Equipment

Chromic Acid / Boric Acid Sulfuric Acid Anodizing Line 1EA (98" x 39" x 59")
 Chemical Conversion Coating Line 1EA (98" x 39" x 59")
 Heat Treat Furnace 2EA (MAX.: 122" x 51" x 86")
 Painting Equipment 5EA (MAX.: 354" x 157" x 118")
 Autoclave 2EA
 Seat Impact Testing Apparatus



Address	1-1 Sohara, Koa-cho, Kakamigahara, Gifu 504-0814, Japan
Tel	+81-58-382-6431 (The main number)
URL	http://www.tenryu-aero.co.jp/english/
Establishment	October 1, 2009
Representative	Representative Director: Masai Kei
Capital	JPY 95 million
Sales	JPY 1,650 million (Fiscal Year 2021)
Employees	187
Major Customers	Kawasaki Heavy Industries, Ltd. / Mitsubishi Heavy Industries, Ltd. / Ministry of Defense / NIPPI Corporation / Honda Aircraft Company, LLC. / ShinMaywa Industries, Ltd.



TENRYU COMPOSITE CO.,LTD

24

Technical Field	Assembly/ Subassembly	Machining	Jig production	Sheet metal forming	Heat treatment	Surface treatment	Composite material processing	Painting	others
							○		

Outline Business

- Design, manufacturing and selling of the composite material product by which it's for Fiber Reinforced Plastic

Our Strength

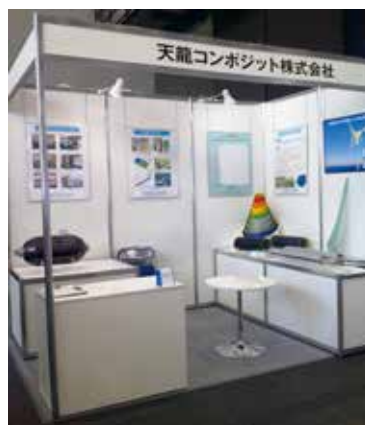
- We can choose the most suitable method from various forming method which are Hand lay-up method, Filament winding method, VaRTM method and SMC method etc and make products that meet the customer's need as an overall manufacturer of a reinforced plastic.

Certification

ISO 9001 : 2015

Equipment

Filament winding machine
 Numerically-controlled Cylindrical grinding machine
 Numerically-controlled Combined lathe
 Numerically-controlled Machining center
 CATIA V5
 SOLIDWORKS Professional



Address	1430-1, Nakakawabe, Kawabe-cho, Kamo-gun, Gifu 509-0304, Japan
Tel	+81-574-53-2351
URL	http://www.tenryu-cmp.co.jp
E-mail	cmp-info@tenryu-cmp.co.jp
Establishment	2009
Representative	Yoshitaka Goto
Capital	JPY 95 million
Sales	JPY 2.45 billion
Employees	145
Major Customers	Kawasaki Heavy Industries, Ltd. / Chiyodakogyo Co.,Ltd. / Nippon sharyo, Ltd. / Other

Technical Field	Assembly/ Subassembly	Machining	Jig production	Sheet metal forming	Heat treatment	Surface treatment	Composite material processing	Painting	others
	○	○	○						

Outline Business

- Aerospace
 - Manufacturing of machined parts and sub-assemblies
 - Design and manufacturing of jigs and fixtures
 - Manufacturing of technical verification models and mock-up
- Other
 - Manufacturing of medical equipment
 - Tooling for the automotive industry

Our Strength

- Many proficient NC programmers and high-skilled operators
- Many state-of-the-art multi-axis machining centers
- Tooling designed and built in house
- Unattended continuous machining and cutting-edge technologies

We manufacture aircraft parts from various materials (ex Aluminum, Titanium, Stainless steel, Inconel and CFRP). We possess 34 spindles, and can manufacture materials up to 17m in length.

We take responsibility for the full manufacturing process, including special processes(NDT, Chemical processing) and painting by properly selected and certified suppliers.

Certification

JIS Q 9100 : 2016 & JIS Q 9001 : 2015 (ISO 9001 : 2015)

Equipment

5 axis machining centers × 25, 4 axis machining centers × 4, 3 axis machining centers × 5
CMM × 3, Laser tracker × 1, CATIA V5 × 6, 3D Printer × 2



Mechanical parts ①



Mechanical parts ②



Mechanical parts ③



Mock-up

Address	209 Kinzokudanchi Kakamigahara City, 509-0249 JAPAN
Tel	+81-58-380-0003
URL	http://www.tokuda.co.jp/
E-mail	sawai@tokuda.co.jp
Establishment	1948
Representative	Yasuaki Tokuda
Capital	JPY 30 million
Sales	JPY 1,400 million
Employees	120
Major Customers	KHI, MHI, ShinMaywa, SUBARU, NIPPI, JAXA

Technical Field	Assembly/ Subassembly	Machining	Jig production	Sheet metal forming	Heat treatment	Surface treatment	Composite material processing	Painting	others
		○	○	○	○				

Outline Business

- Design, development and manufacturing of sheet metal forming dies
- Fabrication of sheet metal parts for airframe and engine (Aluminum,Titanium)

Our Strength

- A variety of sheet metal part manufacturing using our own designed tools
We have a lot of experience of sheet-metal part manufacturing, including hydroforming, brake forming, punch press machining etc.. We can effectively manufacture high quality parts at competitive cost, since we can utilize the forming data saved for many years in designing and development of forming dies.
- Certification of Special Process (Heat Treatment, Nonconventional Machining)
We have obtained Nadcap certification of Heat Treating for aluminum and are able to process 2024-T42, T62, 6061-T42, T62, 6013-T6, and T-7075-W, T62, T73. We have a laboratory in order to calibrate our furnaces by ourselves. The metallographic testing, hardness testing, tensile strength testing, etc. can be done in house. And the laser beam machining is Nadcap certified. The PW4000 engine parts of HASTELLOY material is machined using the certified machine.

Certification

Certification : ISO 9100(JIS Q 9100), ISO 14001
Nadcap (Heat Treating, Nonconventional Machining)

Equipment

NC Router, NC Machining Center, CMM & Digitizer(FARO)
Abrasive Water Jet Cutter, 5-axis Laser Processing Machine*
Bending Roller(L2,600mm, t=6.0), Brake press, Mechanical press, Hydraulic press
Fluid cell press* (L1,600 x W600 x H80mm, Quintus)
L2,000 x W1000 x H120mm, Quintus
Solution furnace / Aging Furnace* (* Nadcap accredited)



Solution furnaces
800x1800x800



Fluid cell press(Quintus)
2000x1000xH120



Tensile Testing Machine



Hardness Tester

Address	4-1-5, Himegaoka, Kani, Gifu 509-0249, Japan
Tel	+81-574-60-1500
URL	https://www.tobakoken.co.jp
E-mail	m-sobajima@tobakosan.co.jp
Establishment	September 26, 1958
Representative	Shigeo Sobajima
Capital	JPY 90 million
Employees	350 (100 for Aircraft)
Major Customers	Mitsubishi Heavy Industries, Ltd. / Kawasaki Heavy Industries, Ltd. / SUBARU CORPORATION / NIPPI Corporation / SHINMAYWA Industries, Ltd.



Technical Field	Assembly/ Subassembly	Machining	Jig production	Sheet metal forming	Heat treatment	Surface treatment	Composite material processing	Painting	others

Outline Business

- At this school we train engineers who will be active in various fields of the aerospace industry.
- There are four departments: Aircraft Maintenance, Aerospace manufacturing (renamed in 2023), Aeronautical Robotics (reorganized in 2023), and Airport Service.
- The number of graduates is 13,671 (as of March 31, 2022). They are active in aerospace industry companies nationwide.

Our Strength

- "We take pride in making not just great technicians, but great people" is our educational philosophy. We are one of the largest aviation colleges in Japan, emphasizing humanity and practical education. Our school provides education in a well-equipped environment, and through exciting and thrilling learning, cultivates aviation professionals with the ability to grow in society and open up the future.



[Department of Aircraft Maintenance]

- Aviation worker training facility designated by the Minister of Land, Infrastructure, Transport and Tourism
⇒The largest number of students in Japan in terms of qualification types and the number of students trained.
- All courses allow students to obtain an aircraft mechanic license.
- The only training facility for second class aircraft mechanics (turbine aircraft) in Japan
- One of only three schools in Japan that offer training courses for airline (ANA and JAL) mechanics.
- The only school in western Japan to train second class aircraft mechanics for turbine helicopters. Only two such schools exist in Japan; has the largest number of trainees in Japan.



[Aerospace manufacturing Department]

- Acquire production technology (design, manufacturing, inspection) specialized in aerospace, and develop human resources that can work effectively where placed after employment.
- Acquire manufacturing skills such as structural assembly and outfitting work by utilizing the only practice in Japan that manufactures full-scale small aircraft, RV-4.
- The only aviation vocational school in Japan to manufacture and conduct launch tests of CANSAT, a mock-up artificial satellite.
- Introducing an autoclave, the first and largest high-temperature, pressure-resistant oven among vocational schools and universities
- Qualifications in non-destructive testing techniques (radiation permeation testing, ultrasonic testing, and penetrant testing) can be acquired while still in school, which are advantageous for employment with major companies



[Department of Aeronautical Robotics]

- The only school in Japan where students can study aviation and robotics.
- Curriculum is designed to allow students to learn from scratch, regardless of their major in high school.
- Employment not only in avionics, but also in the drone and robotics fields that pertain to societal needs.
- Students can study using a B737 and B777 flight simulator, a dual-armed industrial robot, duAro, Pepper robot, drones, etc.
- Industry-academia cooperative education where students can learn from professionals in the field



[Airport Service Department]

<Ground Handling Course>

- Practical training using Japan's actual leading aircraft is conducted in a large dedicated training area on campus.
- Students can play an active role in international cargo loading operations based on a curriculum that includes international air cargo regulations.
- First vocational college in Japan to use VR for pushback training on large aircrafts.

<Cabin Attendant and Ground Staff Courses>

- Students can choose how to self-educate through the introduction of an optional internship system.(Airport internship for up to 6 months or short-term internship + on-campus program to acquire language skills and qualifications)
- Acquire high level of hospitality skills and be active in various fields such as tourism, car dealership reception, and air cargo reception counters.

Address	1577-5 Kittabora Hasama, Seki, Gifu 501-3924, Japan
Tel	+81-575-24-2521
URL	https://www.cna.ac.jp/
E-mail	kouhou@cna.ac.jp
Establishment	1970
Representative	Hisashi Nakamura

NAGOJI IRON WORKS Ltd.

28

Technical Field	Assembly/ Subassembly	Machining	Jig production	Sheet metal forming	Heat treatment	Surface treatment	Composite material processing	Painting	others
		○	○						

Outline Business

- Machine processing for aircraft parts and aircraft jigs and fixtures

Our Strength

- We are capable of manufacturing all of our jig products for parts processing by means of in-house drawings and CAD data without outsourcing.

Equipment

MAKINO v99 v77 61nx, OKUMA MC60VAE MC80H



Address	1887-1, Takanosu, Kamo-cho, Minokamo, Gifu 505-0051, Japan
Tel	+81-574-25-8007
E-mail	nagojio-tk@bz01.plala.or.jp
Establishment	August, 1990
Representative	Isao nagoji
Capital	JPY 8 million
Sales	JPY 80 million
Employees	8
Major Customers	MIZUNO METAL WORKS. CO., LTD / NISHIMURA WORKS CO., LTD / Imao Corporation

Nabtesco Corporation

Nabtesco Corporation [Gifu plant]

29

Technical Field	Assembly/ Subassembly	Machining	Jig production	Sheet metal forming	Heat treatment	Surface treatment	Composite material processing	Painting	others
	○	○	○ ※ only a plan		○	○		○	

Outline Business

- The core of the Nabtesco Group is motion control technology that provides precise controls for moving and stopping. This technology is utilized in everyday products such as precision speed-reduction gears for industrial robots, hydraulic equipment, and automatic doors, etc.
- In the aircraft equipment business, we provide flight control systems and various equipment that serve as the core of aircraft control to major aircraft manufacturers, and also supply parts as after-sales service.

Our Strength

- We enjoy high market shares both in Japan and abroad for a range of products. (Aircraft business) In the world of aviation, where safety must come first, we have accumulated the world's best production technologies and know-how.
- The expertise is incorporated into our products including the high voltage electric power distribution unit, which is adopted for the leading-edge Boeing 787 aircraft, along with Boeing 777X other aircraft equipment.

Certification

JIS Q 9100: 2016 & JIS Q 9001: 2015 (ISO 9001:2015) ISO 14001: 2015 ISO 45001:2018

Equipment

5 axis machining center, 4 axis machining center, lathe, grinding machine, jig borer, ultra high precision grinding machine
High precision hydraulic test stand (aircraft hydraulic oil, fuel system hydraulic oil.)
Heat treatment furnace, various surface treatment equipment.



Address	[Headquarters] JA Kyosai Bldg., 7-9, Hirakawacho 2-chome, Chiyoda-ku, Tokyo 102-0093, Japan [Gifu plant] 1110-1 Miyashiro, Tarui-cho, Fuwa-gun, Gifu 503-2192, Japan
Tel	+81-3-5213-1165 (AEROSPACE COMPANY)
URL	https://www.nabtesco.com
Establishment	September 29, 2003
Representative	Representative Director, President & CEO Katsuhiro Teramoto
Capital	JPY 10 billion
Sales	JPY 7844 billion (2021)
Employees	Consolidated:7,844 (As of December 31,2021)
Major Customers	(Aircraft business) The Boeing Company / Ministry of Defense / Mitsubishi Heavy Industries, Ltd. / Kawasaki Heavy Industries, Ltd. / IHI Corporation / Mitsubishi Aircraft Corporation etc.



NABEYA MFG CO., LTD.

30

Technical Field	Assembly/ Subassembly	Machining	Jig production	Sheet metal forming	Heat treatment	Surface treatment	Composite material processing	Painting	others
		○	○						measurement

Outline Business

- Production of jigs for aircraft parts and machining of aircraft parts.
- Airframe assembly.
- Measuring parts utilizing our portable CMM.

Our Strength

- We can travel to carry out measurements all over the world.
- We have advanced measurement capabilities using portable CMM.

Certification

IJIS Q 9100 : 2016

Equipment

NC machining center, Laser tracker, Articulated portable CMM



Address	7-1-24, Jogo-cho, Kakamigahara City, Gifu 504-0927, Japan
Tel	+81-58-383-6351
URL	http://www.nabeYA-mfg.co.jp/
E-mail	info@nabeYA-mfg.co.jp
Establishment	1971
Representative	Tomohiko Okamoto
Capital	JPY 40 million
Sales	JPY 850 million
Employees	95
Major Customers	Kawasaki Heavy Industries, Ltd. / ShinMaywa Industries, Ltd.



NICHIDEN SEIMITSU KOGYO CO., LTD.

Technical Field	Assembly/ Subassembly	Machining	Jig production	Sheet metal forming	Heat treatment	Surface treatment	Composite material processing	Painting	others
		○		○		○			Electrical discharge processing Laser processin

Outline Business

- EMetal parts processing

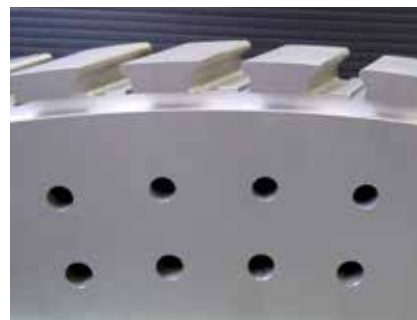
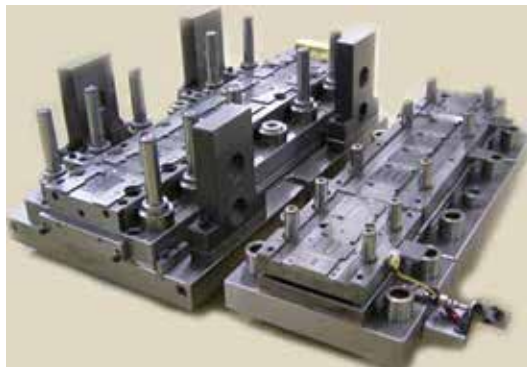
Our Strength

- We are a member of the Gifu Aircraft Components Cluster and the ASAKIN Virtual Cluster, which enables us to handle processes outside of our area of expertise.
- We have business relations in various fields such as aerospace defense, automotive, medical, construction, semiconductors, and home appliances, and can meet any QCDS needs. In particular, our QMS obtained JISQ9100, IATF16949, and ISO9001 certification, and therefore, we provide quality assurance based on the QMS appropriate for the product.

Certification

JIS Q 9100, IATF16949, ISO 9001, ISO 14001

Please contact us for your own QMS as we will support QMS according to the product.



Address	336-1 MITSUZUKA-CHO, OGAKI, Gifu 503-8557, Japan
Tel	+81-584-81-6321
URL	http://www.nsk-cp.co.jp https://www.gacct.org/
E-mail	sales@nsk-cp.co.jp
Establishment	October, 1949
Representative	Masahiro Yoshida
Capital	JPY 88.8 million
Employees	358 (all groups)

Nippon Press Industries Co., LTD.

32

Technical Field	Assembly/ Subassembly	Machining	Jig production	Sheet metal forming	Heat treatment	Surface treatment	Composite material processing	Painting	others
	○	○						○	

Outline Business

- Airplane part assembly
- Automobile and bus part assembly (integrated production)
- Industrial machinery assembly
(construction machinery and machine tool components) (integrated production)
- Integrated production of welfare equipment and medical components

Our Strength

- It is to our great pleasure to announce that it has been 70 years since the establishment of the company, during which time we have had the honour to be of service to customers from around the world from Sakahogi in Gifu Prefecture.
- As a group of craftspeople specializing both in mass-production and in multi-type, small production systems, we utilize our own production management technology for a wide range of fields such as automated mass-production with robotics technologies, jig design and manufacturing as well as die products.
- We believe it is quite unique that the assembly of both mass-produced auto-mobile and airplane components are carried out within the same company.



Address	2145-5, Sakakura, Sakahogi-cho, Kamo-gun, Gifu 505-0074, Japan
Tel	+81-574-26-0171
E-mail	info@np-press.co.jp
Establishment	1947
Representative	Kazuyuki Yoshida
Capital	JPY 50 million
Sales	JPY 1.3 billion
Employees	80
Major Customers	Kawasaki Heavy Industries, Ltd. / Mitsubishi Motors Corporation / KYB Corporation / Gifu Auto Body Co., Ltd. / J-BUS LTD. / Imasen Engineering Corporation etc.



HAYAKAWA INDUSTRIES CO., LTD.

33

Technical Field	Assembly/ Subassembly	Machining	Jig production	Sheet metal forming	Heat treatment	Surface treatment	Composite material processing	Painting	others
	○	○	○	○					

Outline Business

- Aircraft, Rolling Stock, Vaporizer

Our Strength

- Since our establishment, we have produced a wide range of products including parts and assemblies of train vehicles and airplanes as well as heat exchangers and aluminum alloy parts utilizing our special technologies for panel beating, welding and the cutting of steel, aluminum and stainless steel in order to meet the diversifying needs of our customers.
- In addition to the manufacture of products utilizing the panel beating technology applied in the airplane industry, we now manufacture large-size machine parts as well.

Certification

JIS Q 9100

Equipment

Sheet metal bending equipment : Brake Presses 400t 6m 1unit
 NC Roller 1unit

Mechanical processing equipment : 5-Axis Machining Center 3m×8m 1unit
 5-Axis Machining Center 3m×6m 1unit
 3-Axis Machining Center 1.5m×5m 2units
 Gantry type Machining Center 1.2m×4m(2APC) 1unit
 3-Axis Vertical Machining Center 8units
 4-Axis Horizontal machining Center 0.8m×0.9m 1unit

Inspection equipment : CMM 1unit



Address	2-446 Sue-Cho, Kakamigahara, Gifu 509-0108, Japan
Tel	+81-58-384-1148
URL	http://www.hayakawa.biz-web.jp/en/
E-mail	hkk@aoros.ocn.ne.jp
Establishment	October, 1956
Representative	Futoshi Hayakawa
Capital	JPY 98 million
Sales	JPY 1 billion
Employees	100
Major Customers	Kawasaki Heavy Industries, Ltd. NIPPON SHARYO, LTD. KOBE STEEL, LTD



HIKARI MANUFACTURE CO., LTD.

34

Technical Field	Assembly/ Subassembly	Machining	Jig production	Sheet metal forming	Heat treatment	Surface treatment	Composite material processing	Painting	others
		○	○						

Outline Business

- Equipment production for transportation and functional part making for cars

Our Strength

- Achievement
Realization of the stable profit for which a fluctuation of global economy (the business) is difficult to influence by 3 divisions of different type of business development (aerospace, shipping, general industrial machinery and car).
- Technology
The in-house technology, the external information and the technology we have grown for a long time by receipt of order of the most advanced part, I keep wrestling and doing a further challenge of "peculiar technology" flexibly.
- The quality
Thoroughness of the quality control which obeys that by the merit of including the systematization to guarantee the quality, the international authentication and each customer authentication.

Certification

ISO 14001, ISO 9001, JIS Q 9100, Nadcap

Equipment

Made of Makino milling cutter 5 axis MC MAG1 1unit
 Made by Toshiba Machine Horizontal rib process machine MF-2560 2units (1 for each 3 axes and 5 axes) , Gate type MC MCW-7140 1unit
 Made of Shin Nippon Koki Horizontal high-speed profiler GHP-200B 2units (1 for each 3 axes and 5 axes) , Large vertical boring and turning mill SVT-5000C 1unit
 Made of Mitsui energy machine Horizontal 5 axis MC Hu100-5X 3units, Horizontal 5axis MC Hu80-5x 6units



Address	248-3 Nakano, Kasamatsu-cho Hashima-gun, Gifu 501-6034, Japan		
Tel	+81-58-387-4361		
URL	https://www.hikariss.co.jp		
E-mail	g.affairs@hikariss.co.jp		
Establishment	1962		
Representative	Isao Matsubara		
Capital	JPY 90 million		
Sales	JPY 8.5 billion		
Employees	345		
Major Customers	Mitsubishi Heavy Industries, Ltd., DENSO Corporation, Kawasaki Heavy Industries, Ltd., SUBARU CORPORATION etc.		

Technical Field	Assembly/ Subassembly	Machining	Jig production	Sheet metal forming	Heat treatment	Surface treatment	Composite material processing	Painting	others
									Human resource development

Outline Business

- Training and human resource development business: training of aircraft industry engineers, 3D CAD training, training for job seekers, etc.
- SI business: VR development, robot development, business application development, provider and network business
- Tenant business: management and operation of all 30 tenant rooms.

Our Strength

- In the training and human resource development business, we provide training in design, CAD, production technology, integrated production, non-destructive inspection, and assembly skills, with a focus on human resource development projects for the aircraft industry. We also conduct on-site lectures to support newcomers to the aircraft industry.
- In the SI business, we specialize in VR development, robot development, and business application development. In the robotics field, in particular, we develop applied system products using various sensors, actuators, and embedded technologies.
- In the network business, we are developing a wide range of businesses, including the commercialization of automatic radio tracking systems that apply the technology of the Disaster Relief Aircraft Integrated Operation System (D-NET) being developed by JAXA.
- Through the aforementioned activities, we are contributing to the development of local industries and job creation.s.

Human Resources Development Menu

Aircraft Design Engineer Training	CAD Training CATIA V5 Solid Works etc	Design Engineer
Aircraft Manufacturing Engineer Training	Aircraft Integrated Production Training	Manufacturing Engineer
Non Destructive Inspection PT/UT		Non Destructive Inspection Engineer
Aircraft Manufacturing Training		Manufacturer

Various Subsidies
Human Resources

[Training and Human Resource Development Business]



[SI Business]



[Network Business]



Address	1-1 Technoplaza, Kakamigahara, Gifu 509-0109, Japan
Tel	+81-58-379-2277
URL	https://www.vrtc.co.jp/
E-mail	webmaster@vrtc.co.jp
Establishment	1993
Representative	Representative director Masataka Matsubara
Capital	JPY 2.3 billion
Sales	JPY 278 million
Employees	18
Major Customers	Gifu Prefecture / JAXA / Municipality etc.

Fujiwatech Ltd.

36

Technical Field	Assembly/ Subassembly	Machining	Jig production	Sheet metal forming	Heat treatment	Surface treatment	Composite material processing	Painting	others
		○							

Outline Business

- Manufacture of aircraft parts, medical equipment parts and precision equipment parts.

Our Strength

- We are good for the precision machining of any kind of high quality small quantity product. And we can metalworking in any process at aluminum, steel, stainless and sand casting parts.
milling
lathing
cutting and more.
- 5 axis machining and composite lathe use to milling / lathing the metal. In measuring use a three dimensional measuring machine.

Equipment

5-Axis Machining Center 2units,
4-Axis Machining Center 4units,
3-Axis Machining Center 2units,
CNC Turning Center 4units,
CMM 1unit



Head office factory



Aluminum products



Stainless products

Address	1878 Kamiyahagi-cho, Ena, Gifu 509-7506, Japan
Tel	+81-573-47-2856
URL	https://www.fujiwa-t.co.jp/
E-mail	contact@fujiwatecnos.com
Establishment	November 28, 1997
Representative	Akinori Ito
Capital	JPY 7 million
Sales	JPY 100 million
Employees	13
Major Customers	Enakiki Co., Ltd. / Aichi tokei denki Co., Ltd. / Komori gokin, Ltd.

MIZUNAMI SEIKI CO., LTD.

37

Technical Field	Assembly/ Subassembly	Machining	Jig production	Sheet metal forming	Heat treatment	Surface treatment	Composite material processing	Painting	others
	○	○	○						

Outline Business

- Aircraft components : Machining and Production
- Home Use Sewing Machines : Designing and Assembling
- AutoParts: Machining

Our Strength

- Aircraft components
We have over 50 years of machining achievement. We can make delivery time shorter as Jigs used are self-designed and produced. Also, every single assembled parts are done by our certificated stuff with high skills of craftsmanship.
- Apparel Machinery
These are our inception business. we are mainly manufactures home-use sewing machines nowadays. To achieve high quality, we control integrated production from development to assemble. To achieve low cost products, we manufacture and procure parts at overseas bases.
- Auto Parts
We use over 50 years of Auto-Parts Production know-how like "Just in Time" supply concept. These concepts are also used at aircraft components line.

Certification

JIS Q 9001、 JIS Q 9100

Equipment

Horizontal machining center 7units, Vertical machining center 4units,
Coordinate Measuring Machine 2units



Head office factory
(Production for aircraft component)



Overseas factory (Taiwan)



Domestic sewing machine
(Overlock sewing machine)

Address	1040, Terakawado-cho, Mizunami, Gifu 509-6121, Japan
Tel	+81-572-68-2101
URL	http://www.mizunami-seiki.co.jp
E-mail	info@mizunami-seiki.co.jp
Establishment	1951
Representative	President & CEO Koji Nagara
Capital	JPY 72.86 million
Employees	91
Major Customers	Mitsubishi Heavy Industries, Ltd. / Brother Industries, Ltd. / Arakawa Industry CO.,LTD.



MIZUNO METAL WORKS CO., LTD.

38

Technical Field	Assembly/ Subassembly	Machining	Jig production	Sheet metal forming	Heat treatment	Surface treatment	Composite material processing	Painting	others
	○	○	○						

Outline Business

- Machining of the aerospace product
- Assembly and overhaul of the airframe of airplanes
- Machining of the hydraulic components
- Design and production of jigs for aerospace products

Our Strength

- We own 20 NC lathes (MAX 1,600mm) and 70 machining centers (MAX 6,000mm), and are good at processing aluminum, iron, titanium, stainless steel, etc.
- We can handle integrated manufacturing from single item small lot to mass production, from material procurement to welding, processing, surface treatment, and sub-assembly.
- We own a 3D measuring instrument and a laser tracker, and we can assemble large items on site and inspect various sizes.
- We also create machining plans, jig and tool design and manufacturing, and NC programming in-house.



Address	4539-10 Kurachi, Seki, Gifu 501-3936, Japan
Tel	+81-575-21-5511
URL	https://www.miztec.jp
E-mail	info@miztec.jp
Establishment	February 10, 1951
Representative	PRESIDENT Tomohiro Mizuno
Capital	JPY 48 million
Employees	177
Major Customers	Kawasaki Heavy Industries, Ltd. / Mitsubishi Heavy Industries, Ltd. / KYB Corporation / SUBARU CORPORATION / NIPPI Corporation



Technical Field	Assembly/ Subassembly	Machining	Jig production	Sheet metal forming	Heat treatment	Surface treatment	Composite material processing	Painting	others

Outline Business

- **Material Sales**
We are engaged in secondary processing (heat treatment, pickling and drawing processing) of materials for automotive fasteners, mainly supplying wire rods to our customers.
In recent years, we have entered the aircraft business and started handling materials for aircraft.
We can provide low-alloy steel (SAE8740), stainless steel (15-5PH, 17-4PH), aluminum, titanium, etc.
- **Non-destructive testing**
In June 2016, we introduced a fluorescent penetrant inspection facility, and in March 2018, we obtained Nadcap certification, which enables us to perform fluorescent penetrant inspections of parts for aircraft and space.

Our Strength

- **Material Sales**
 - We procure AMS standard materials from overseas and cut and process them at our company to supply in lengths that meet customer requirements.
 - Depending on the amount to be used, we can procure several years' worth of materials in bulk and stock them in our company to provide low prices, short delivery times, and in small quantities.
- **Non-destructive testing**
 - We can provide non-destructive inspection services with short delivery time and small lot size, which other companies cannot offer.
 - We can provide two types of inspection: penetrant inspection and magnetic particle inspection.
 - We can also provide non-destructive testing for jigs and tools that are large in size and difficult to handle. We can send our inspectors to the designated location to perform the testing.
 - Now, we are also capable of etching titanium, so you can trust your aircraft engine parts to us for penetrant testing!

Certification

ISO 9001, ISO 14001, JIS Q 9100, Nadcap (PT), Deming award

Equipment

【Cutting machines】

- Carbide circular sawing machine: capable of cutting general steel and stainless steel bars from 10 mm to 70 mm in diameter
- Chucking type cutting machine: capable of cutting aluminum bars for sizes up to W300 x H200 mm frontage
- Band sawing machine: capable of cutting general steel bars including stainless steel and titanium bars from 20mm to 260 mm in diameter.

【Non-destructive testing】

- Penetrant Testing: Type I, Methods A&B&D, Form a, Sensitivity Level 3 (Method D is 4) according to ASTM E 1417 & JIS Z 2343 are available. Method C is also available upon request.
- Magnetic particle inspection: yoke according to JIS Z 2320 is available.



Various bars



Penetrant testing

Address	1-8-1, Hachiyadai, minokamo, Gifu 505-0039, Japan
Tel	+81-574-24- 0628
URL	http://www.meihoku-kogyo.co.jp/
E-mail	kazu.nishimura@meihoku-kogyo.co.jp
Establishment	1947
Representative	Yasukazu Fukunishi
Capital	JPY 60 million
Sales	JPY 20.5 billion
Employees	216
Major Customers	MEIRA Corporation / Owari Precise Product Co., Ltd. / TERAUCHI MFG CO., LTD. / MinebeaMitsumi Inc. / TAMAGAWA SEIKI CO., LTD. / AIKOKU ALPHA CORPORATION

MEIRA Corporation [seki plant]

40

Technical Field	Assembly/ Subassembly	Machining	Jig production	Sheet metal forming	Heat treatment	Surface treatment	Composite material processing	Painting	others
	○	○	○		○	○		○	

Outline Business

- Precision threaded parts and Cold forging parts for automobile, Fasteners, Machining parts and Rod assembly for aerospace, orthopedic implants and instruments.

Our Strength

- Product and Service Features
Meira supplies materials, and offers one-stop manufacturing and quality assurance which covers machining, heat treatment, non-destructive inspection, surface treatment, coating/painting, and assembly.
- SPECIAL PROCESS
Meira is NADCAP-certified in heat treatment, surface treatment, non-destructive inspections, and shot peening.

Certification

JIS Q 9100, ISO 14001, NADCAP (AC 7102, A C7108, AC 7114, AC 7117)



【Seki Plant】



【Seki 3rd Plant】



【Seki 2nd Plant】



【Seki 4th Plant】



Address	17-15,Tsubaki-cho,Nakamura-ku,Nagoya, Aichi 453-0015, Japan 【Seki Plant】 81-1 Shinhazama, Seki, Gifu 501-3923, Japan
Tel	+81-52-459-1276
URL	https://www.meira.co.jp
E-mail	h.yokoi@meira.co.jp
Establishment	June 1, 1932
Representative	Makoto Ohashi, Representative Director President
Capital	JPY 330 million
Sales	JPY 23,491 million
Employees	710
Major Customers	JDA / Mitsubishi Heavy Industries, Ltd. / Kawasaki Heavy Industries, Ltd. / SUBARU CORPORATION/ IHI / ShinMaywa Industries, Ltd. / NIPPI Corporation / JAMCO Corporation / Shimadzu Corporation / Nabtesco Corporation / KYB Corporation / NEC Corporation / Mitsubishi Electric Corporation etc.



Technical Field	Assembly/ Subassembly	Machining	Jig production	Sheet metal forming	Heat treatment	Surface treatment	Composite material processing	Painting	others
	○	○	○	○			○		

Outline Business

- Forming of Aviation Metal Sheet, Molding of Aviation Composite Parts, Subassembly of Aviation Parts
Manufacturing of Jigs for Aviation, Machining of Aviation Metal Parts

Our Strength

- We can offer composite products with our integrated production processes which range from manufacturing of molds, molding, trimming and dimensional inspection to non-destructive inspection.

Certification

JIS Q 9100 : 2016

Equipment

Autoclave (φ2000x4000L) 1unit
 NC Routers with 5 Simultaneously Controlled Axes 5units
 Machining Centers with 5 Simultaneously Controlled Axes 1unit
 CNC Coordinate Measuring Machine (1000x1600x3000) 1unit
 Non-Contact Coordinate Measuring machine 1unit
 Stretch Former (20t) 2units
 Stretch Former (50t) 1unit
 Clean Room (Cleanliness Class 100,000, 624m²)



Address	1-15-6, Sohara Kitayama-Cho, kakamigahara, Gifu 504-0801, Japan
Tel	+81-58-382-1151
URL	http://www.yashima-mfg.co.jp
E-mail	nakashima-ka@yashima-mfg.co.jp
Establishment	1973
Representative	Ryosuke Inoue
Capital	JPY 15 million
Sales	JPY 1 billion
Employees	100
Major Customers	Kawasaki Heavy Industries, Ltd.

YOSHITECH CO., LTD.

42

Technical Field	Assembly/ Subassembly	Machining	Jig production	Sheet metal forming	Heat treatment	Surface treatment	Composite material processing	Painting	others
			○						

Outline Business

- Design and manufacture of anti-earthquake reinforcement construction products for bridge-girders and architectural buildings.
- Design and manufacture of scaffolding for assembling aircrafts and helicopters.
- Design and manufacture of can manufacturing products (square and round tanks, cradles, promenades and stairs) .
- Design and manufacture of relevant equipment, molds, scaffolding, metal brackets .
- Design and manufacture of architectural steel beams and relevant components.
- Powder coating and surface finishing treatment (shot blasting and japanning) .
- Design and manufacture of steel molds for bridge-girders and architectural buildings.

Our Strength

- Our company is playing an active role in the field with the aim of fostering innovation and solid technologies.
- Our target for quality is "Striving to gain trust from our customers with better quality, nurturing human resources, and contributing to society." We have been awarded the "H grade" by the Ministry of Land, Infrastructure, Transport and Tourism, as well as an ISO 9001 compliance certificate.

Certification

ISO 9001
H grade (by the Ministry of Land, infrastructure, Transport and Tourism)

Equipment

CNC Drilling Machine SHOWA SEIKO TCV8025LD 1unit
 Laser Cutting Machines KOMATSU NTC TLV-510E40F 2units
 Bevel Machining Device For H-SHAPED STEEL Hataly HQB-1055NS 1unit
 Bevel Machining Device For H-SHAPED STEEL SHINX MHV-1050NCA 1unit
 Combination Drilling and Cutting Sawing Machines
 (Automatic length measuring)
 TAKEDA CBF-4020W 1unit
 Welding Robot System KOBELCO 10T-800MP2 1unit
 Welding Robot System KOBELCO ARCMAN-MP 1unit



Address	1115-1, Shimokata, Ono-cho, Ibi-gun, Gifu 501-0523, Japan
Tel	+81-585-34-3899
URL	https://www.yoshitech.co.jp
E-mail	yoshitech01@yoshitech.co.jp
Establishment	June 26, 2002
Representative	Yoshihiro Yoshida
Capital	JPY 30 million
Sales	JPY 2,900 million
Employees	75
Major Customers	Dai Nippon Construction / KAWAJU GIFU ENGINEERING CO., LTD. / TOMOE Corporation Murata Machinery, Ltd. / Sankyu Inc. / TAKUMA CO., LTD. / TOMOE KIKAI KOGYO Co.,LTD. / MARUWA KOGYO Co.,LTD.

Technical Field	Assembly/ Subassembly	Machining	Jig production	Sheet metal forming	Heat treatment	Surface treatment	Composite material processing	Painting	others
	○	○	○	○					Welding

Outline Business

- Aerospace manufacturing of sheet metal parts, sub-assembled parts, tooling
- Rolling stock manufacturing of sheet metal component, sheet metal air duct, roof etc.

Our Strength

- sheet metal trimming, bending, stamping,
- machining welding (for tooling and rollingstock component)

Certification

JIS Q 9100 : 2016, JIS Q 9001 : 2015

Equipment

Laser Tracker LTD600, CMM RVA 1000-S24, Machining Center MB-66VB, NC Router NCN8000, Advanced hybrid Laser LS3015HL, NC Brake Presses PHS160・BH8525, BH13530, Spot welding Machine 11A, Crank Press 110t, CAD/CAM System AUTO-CAD / MASTERCAM X/ TOPsolid V6.18, CATIA V5, CAD MAC G5

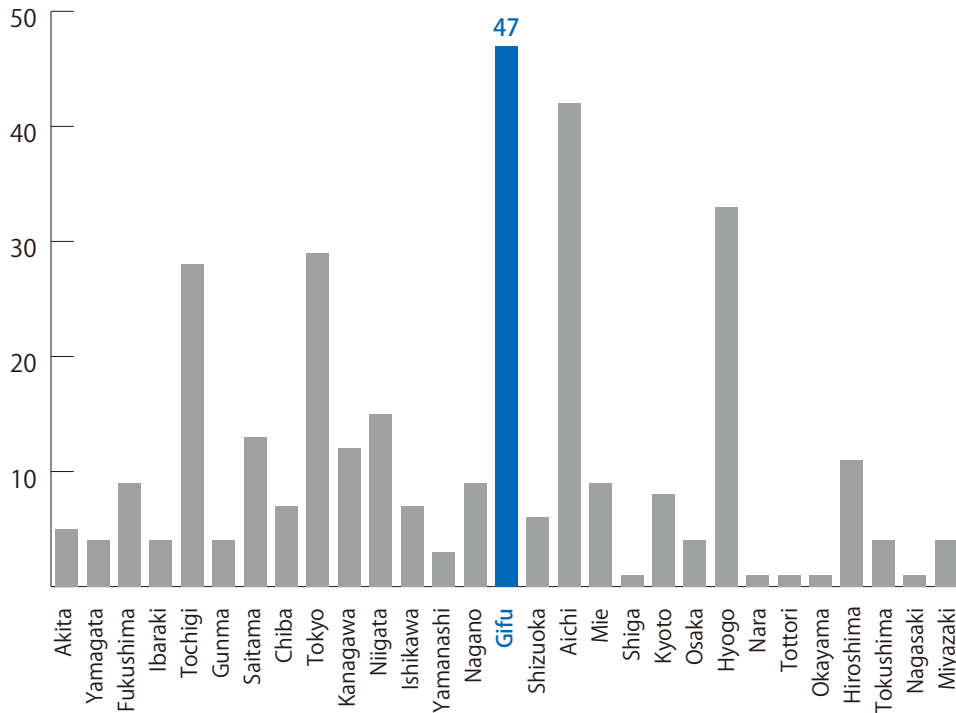


Address	2-33 Technoplaza, Kakamigahara, Gifu 509-0109, Japan
Tel	+81-58-322-3135
URL	https://www.wako-gifu.co.jp/
E-mail	a-hashimoto@wako-gifu.co.jp
Establishment	1972
Representative	Yasuyo Hashimoto
Capital	JPY 10 million
Sales	JPY 700 million
Employees	71
Major Customers	Kawasaki Heavy Industries Aerospace System Company / Kawasaki Railcar Manufacturing Co.,Ltd. / J-TREC (Japan transport engineering company) / NARITA MFG / Nippon Sharyo, Ltd. / The Kinki Sharyo co, Ltd.

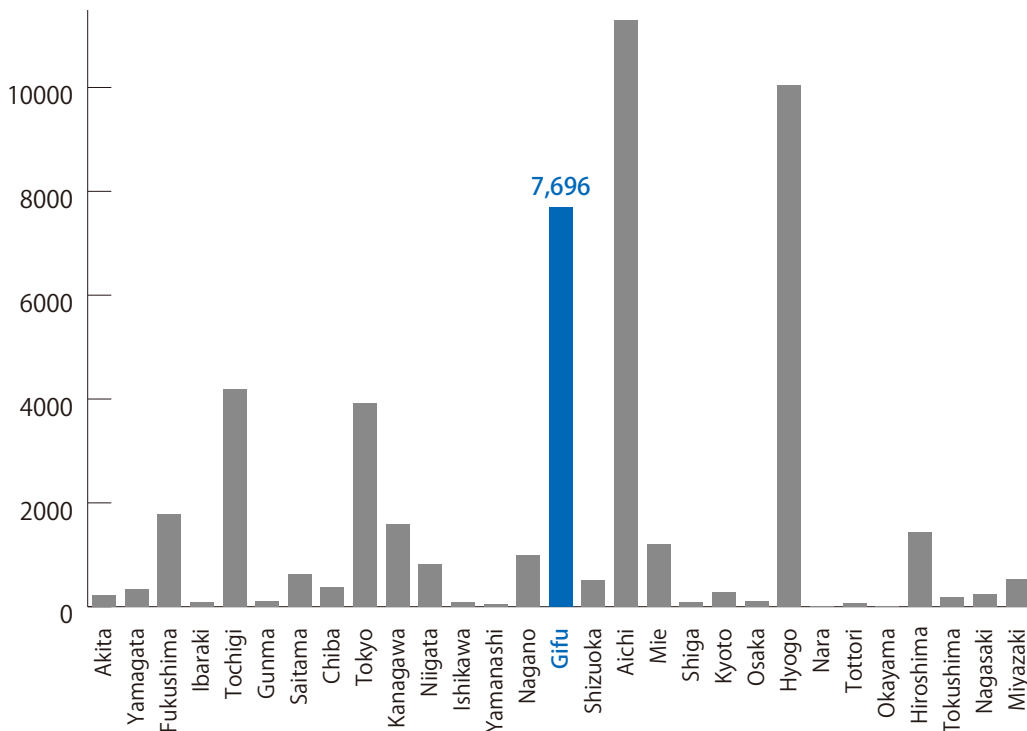
Aerospace Industry in Gifu Prefecture

● **Manufactured goods shipments** JPY 234 billion (4th place in Japan)

● **Number of aerospace-related companies** 47 (1st place in Japan)



● **Number of employees** 7,696 (3rd place in Japan)



(Information sources : Census of Manufacture 2020)

For Aerospace Related Companies Who Plan to Expand Their Business into Gifu Prefecture !

★ Special Zone to Create Asia's No.1 Aerospace Industrial Cluster

Companies which are selected for the Special Zone can receive benefit such as interest subsidy and removal of green restriction.

★ One-stop Services for the Aerospace Industry

Many programs are available to companies with the provision of coordinators in the aerospace industry in order to support the various needs of the industry.

● Support for Exhibitions & Business Meetings

For the Japan International Aerospace Exhibition and Aeromart Toulouse etc., we cover space fees for exhibitions on behalf of participants as well as provide advice for the preparation of documents for presentation.

● Support for Human Resources Development of Companies

We hold seminars on useful information and knowledge for new entries and business expansions in the aerospace industry.

● Assistance for Small and Medium-sized Enterprises and Groups in the prefecture

We offer subsidies up to 10 million yen for initiatives including the development of new technology & methods and the acquisition of authorizations !

★ Human Resources Development Project

We cover one third of the training fees of training courses on the aerospace industry for employees carried out by companies in the prefecture.



Participation in International Aerospace Exhibitions & Business Meetings



Seminar on Aerospace



Training Room Equipped with a Full-range of Tools



Training for the Aerospace Industry

Gifu Prefecture offers the following programs to companies located in the prefecture:

★ Subsidy Scheme for the Establishment of Business Offices etc.

● Establishing New or Additional Offices such as Factories and Research Institutions within the Prefecture

We offer subsidies up to 1 billion yen to cover a part of the expenses (e.g., amounts of initial investment for non-current assets) required for the acquisition of lands, buildings and depreciable assets.

Further, some industry such as the aerospace industry may receive benefit, in addition to the above-mentioned subsidies, from us including the reduction of real-estate acquisition tax.

● Establishing Business Offices with the Use or Revitalization of Large Sized & Closed Plants

We offer subsidies up to 1 billion yen for a part of the initial investment for non-current assets etc.

● Support for Companies Outside the Prefecture Which Transfer All or Part of Their Offices That Function as Their Main Offices into the Prefecture

We offer subsidies up to 1 billion yen for a part of the initial investment for non-current assets etc.

★ Introducing Lands for Plants

We provide information regarding lands for plants and various support systems in response to the needs of individuals or companies who are searching for lands to establish plants etc. within the prefecture.

★ Guidebook

Download

<https://www.pref.gifu.lg.jp/page/9732.html>



Company Exhibition: Municipality Brochures Introducing Lands for Plants



Company Exhibition: Business Meeting

GIFU AEROSPACE INDUSTRIES 2022

